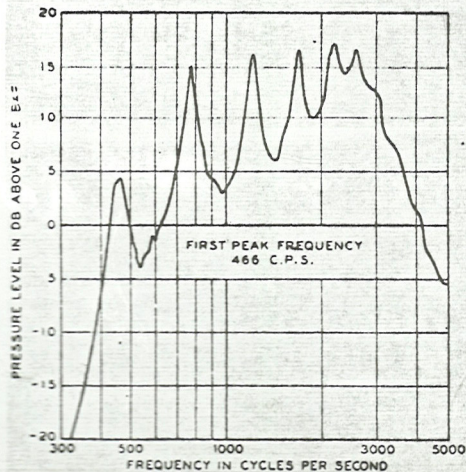


aus:
C.T. MOLLOY, Response peaks in
finite horns,
JASA 22, 1950, 551-557
Abb. S.

aus:
N.V. FRANSSEN, The mechanism of the
human voice and wind
instruments,
4. ICA Kopenhagen 1962, Paper G 33



Measured axial response curve for circular mouth horn.

L

18

Γ

Die
1/18

