

Luce, D. A.  
 DYNAMIC SPECTRUM CHANGES OF ORCHESTRAL INSTRUMENTS\*

1975 J. AES 23, 565-568

Voc

Dia  
 22/20

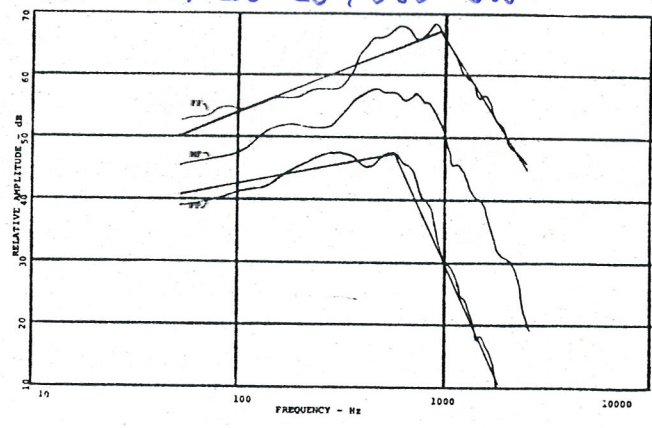
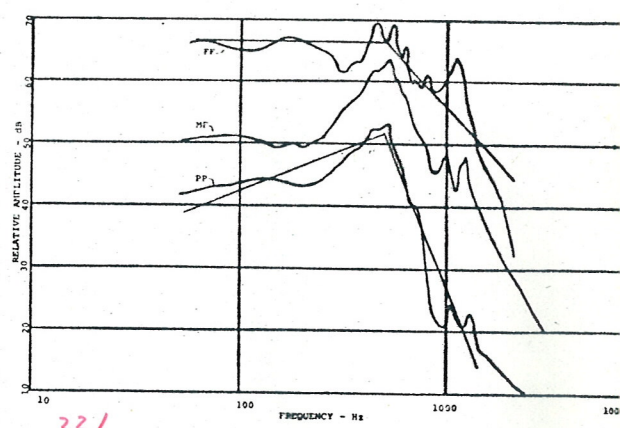


Fig. 2. Trombone spectral envelope.



22/24 Fig. 6. Bassoon spectral envelope.

Dia  
 22/21

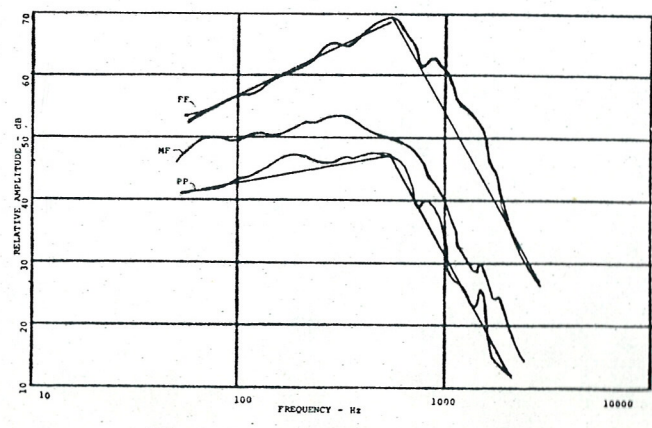
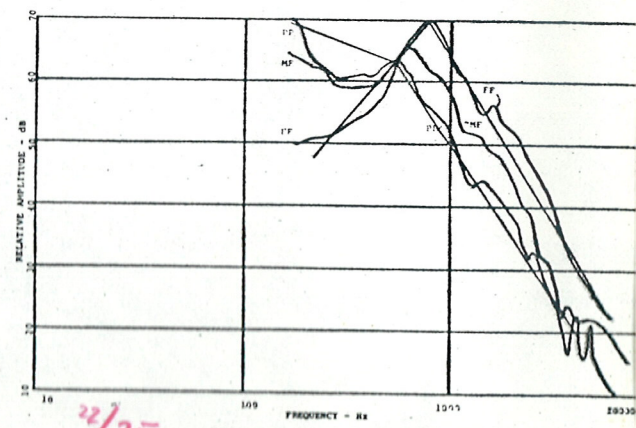


Fig. 3. French horn spectral envelope.



22/25 Fig. 7. Flute spectral envelope.

Dia  
 22/22

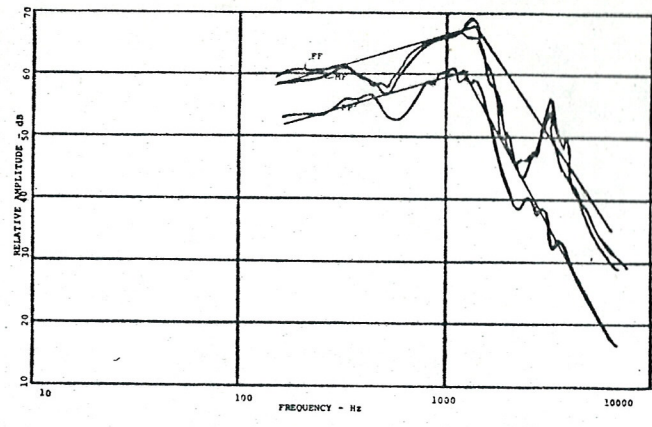
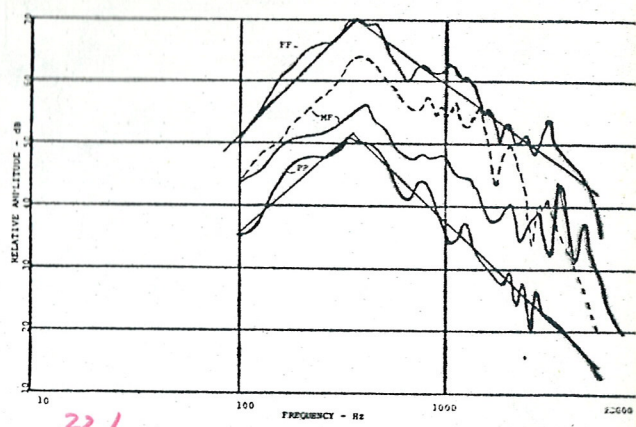


Fig. 4. Oboe spectral envelope.



22/26 Fig. 8. Violin spectral envelope.

Dia  
 22/23

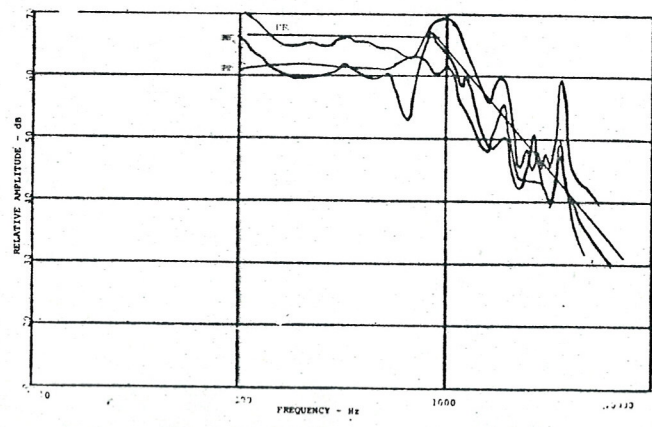
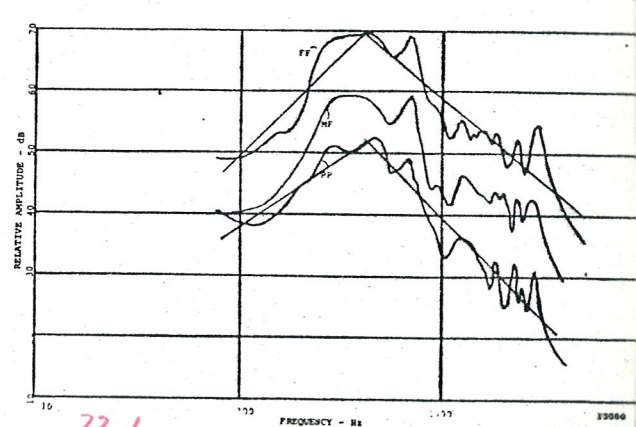


Fig. 5. English horn spectral envelope.



22/27 Fig. 9. Viola spectral envelope.